

# HOOF-TEC™ FOOTBATH PRODUCTS

LESS METAL IN YOUR FOOTBATH. LESS METAL ON YOUR OPERATION.

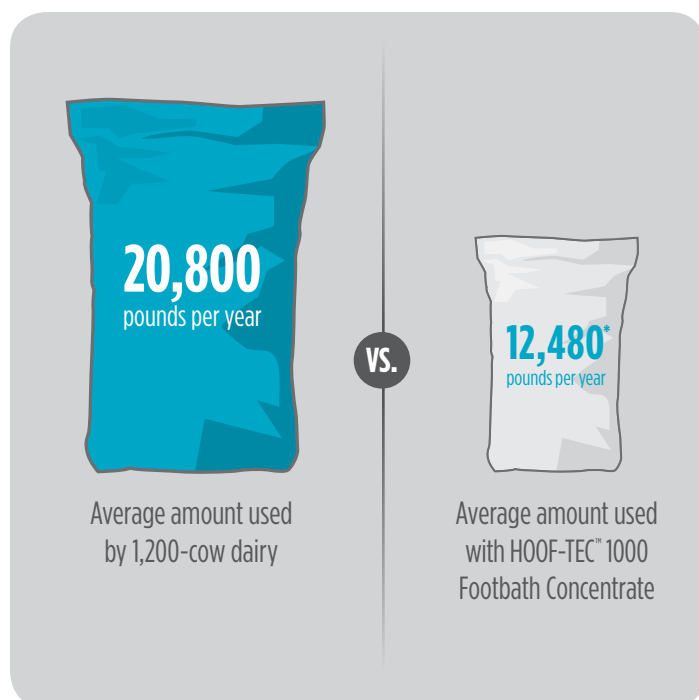
 Hoof-Tec™

# TAKE METAL DOWN A NOTCH IN YOUR FOOTBATH

You don't need so much copper sulfate in your footbath. Zoetis offers you a better solution. HOOF-TEC™ footbath products are scientifically engineered for a more efficient footbath, helping reduce your copper sulfate use by up to 40%.\*

And the less metal in your footbath, the less in your manure pit, the less on your dairy and the less in your fields. Making one small change with HOOF-TEC means less copper sulfate on your operation and your environment.

## 40%\* REDUCTION IN COPPER SULFATE USE



\*Based on traditional copper sulfate dosage rate of 5% of footbath volume. Copper sulfate dosage with HOOF-TEC 1000 Footbath Concentrate is reduced to a rate of 3% of footbath volume. The change in dosage results in a 40% reduction of copper sulfate use.

# RUN A BETTER FOOTBATH

Our leading HOOF-TEC™ footbath products work with your current footbath protocol while allowing you to use up to 40%\* less copper sulfate. And with better pH management leading to fewer footbath changes, less metal has never sounded better.

## Hoof-Tec™ 1000 Footbath Concentrate

HOOF-TEC 1000 Footbath Concentrate is scientifically engineered to help safely lower the pH of footbath water to ionize the copper. More ionized copper allows for more available copper in your footbath. And that means a more efficient footbath — you can use up to 40%\* less copper sulfate. Just pour it on top of your copper sulfate and run your footbath.

### Available in:

- 5-gallon jug
- 15-gallon drum
- 55-gallon drum

## Hoof-Tec™ Complete®

HOOF-TEC Complete® is an all-in-one footbath solution that is a combination of low pH copper sulfate and hoof-conditioning salts and minerals. Just mix HOOF-TEC Complete with water and keep moving. No need for additional copper sulfate. And it can be integrated with your existing automated footbath system to provide peace of mind and ease of use.

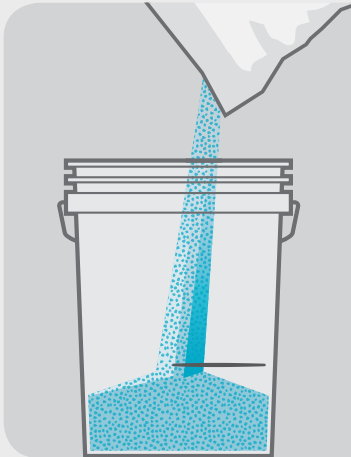
### Available in:

- 55-gallon drum
- 260-gallon tote

# ONE SMALL CHANGE. ONE BIG DIFFERENCE.

# IT'S IN THE MIX

HOOF-TEC™ footbath products integrate seamlessly into your footbath protocols.



## STEP 1

**FILL THE BUCKET TO THE LINE WITH PROPER AMOUNT OF COPPER SULFATE.**

- If footbath is 50 gallons or less, use 15 pounds of copper sulfate (mark fill line at 4.25 inches from bottom of bucket).
- If footbath is larger than 50 gallons, use the following to determine the amount of copper sulfate needed: Footbath volume \_\_\_\_\_ gallons x 0.3 = \_\_\_\_\_ pounds of copper sulfate. Fill the bucket with copper sulfate and mark a line at that level for easy measuring in the future.



## STEP 2

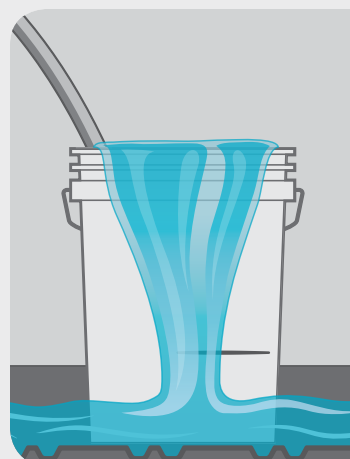
**FILL PITCHER TO THE LINE WITH PROPER AMOUNT OF HOOF-TEC™ 1000 FOOTBATH CONCENTRATE.**

- Determine the amount to use: Footbath volume (gallons) \_\_\_\_\_ x 0.5 = \_\_\_\_\_ ounces of HOOF-TEC 1000 Footbath Concentrate. Pour into the pitcher and mark a line at that level for easy measuring in the future.



## STEP 3

**POUR HOOF-TEC 1000 FOOTBATH CONCENTRATE ON TOP OF THE COPPER SULFATE IN THE BUCKET.**



## STEP 4

**PLACE THE BUCKET IN A CLEAN, EMPTY FOOTBATH. PLACE A HOSE IN THE BUCKET AND LET THE WATER OVERFLOW. FILL THE FOOTBATH TO 1 INCH BELOW THE RIM.**

# MORE WAYS TO BRING THE METAL WAY DOWN

## TOPICAL SPRAY

### **Hoof-Tec™** Copper-Shot Topical Spray

HOOF-TEC™ Copper-Shot Topical Spray provides a footbath in a bottle. It's perfect for your heifers and dry cows or if you don't have a footbath system. Spray undiluted when you need better management or dilute 1:1 with water to help maintain hoof health.

**Available in:**

- 1-gallon jug
  - 5-gallon jug
  - 15-gallon drum
  - 55-gallon drum
- 

## ORGANIC-FRIENDLY MANAGEMENT OPTIONS

### **Hoof-Tec™** Organic Footbath Concentrate



HOOF-TEC Organic Footbath Concentrate offers organic dairy operations the same benefits and management options as HOOF-TEC 1000 Footbath Concentrate.

**Available in:**

- 55-gallon drum
- 260-gallon tote

### **Hoof-Tec™** Organic Topical Spray



HOOF-TEC Organic Topical Spray provides the same management options as HOOF-TEC Copper-Shot Topical Spray but for organic dairy operations.

**Available in:**

- 1-gallon jug
  - 5-gallon jug
  - 15-gallon drum
  - 55-gallon drum
- 

## REPLACEMENT POWDERS

### **Hoof-Tec™** Copper-Cutter Dry Mix

HOOF-TEC Copper-Cutter Dry Mix is a better alternative to traditional copper sulfate. It dissolves easily in water and is more cost-effective than copper sulfate. It can be used with HOOF-TEC 1000 Footbath Concentrate and is available in 50-pound bags.

### **Hoof-Tec™** Copper-Free Dry Mix

HOOF-TEC Copper-Free Dry Mix allows you to completely replace copper sulfate in your footbath and dissolves easily in water with additional hoof conditioners. It can be used with HOOF-TEC 1000 Footbath Concentrate and is available in 50-pound bags.

# TAKE THE NEXT STEP

There is a new way to run a footbath with HOOF-TEC™; we're here to walk you through it. Visit [hoof-tec.com](http://hoof-tec.com) or **contact your Zoetis representative.**

 Hoof-Tec™

All trademarks are the property of Zoetis Inc., its affiliates and/or its licensors. All other trademarks are the property of their respective owners. ©2014 Zoetis Inc. All rights reserved. HFT13001